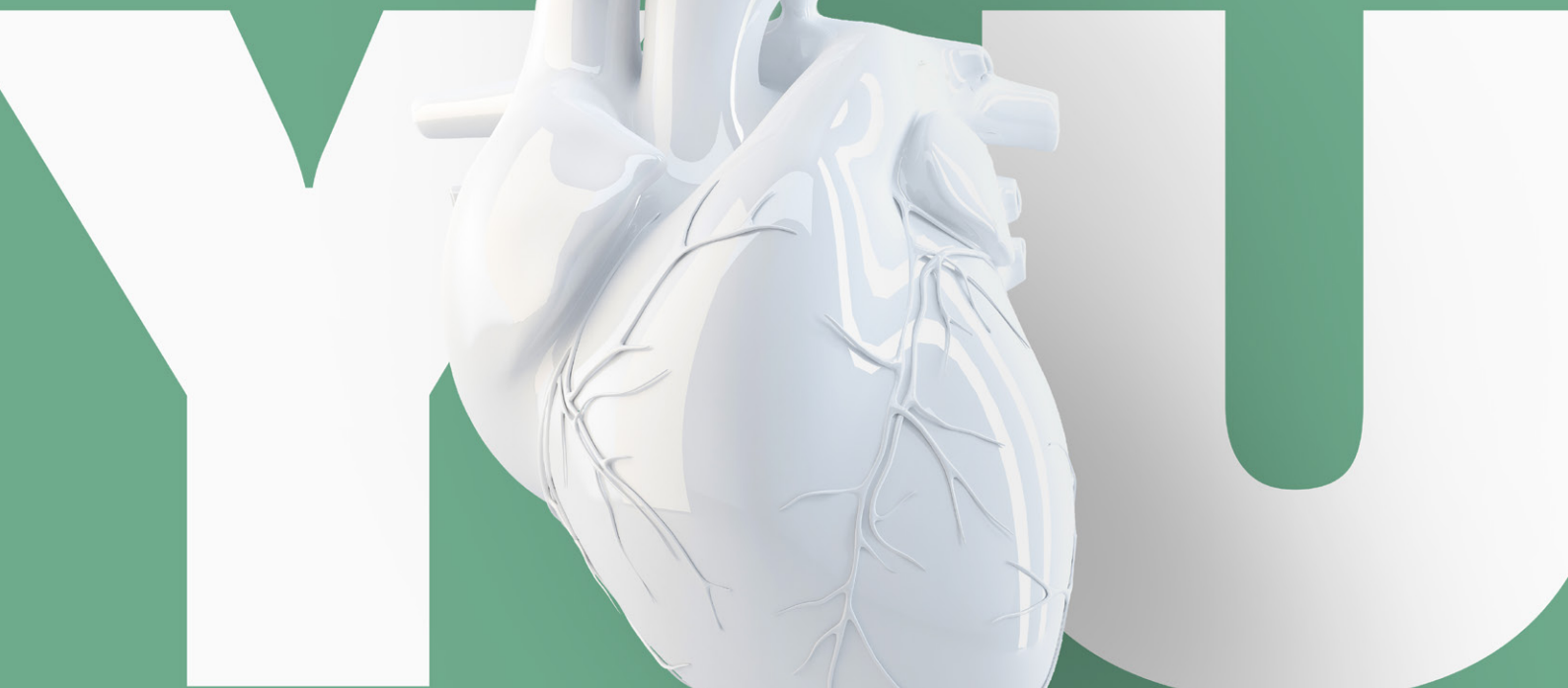


# BECAUSE



**REACH-OPS-WP-001**

Project management procedure

**REACH-OPS-WP-004**

Management of change procedure

**REACH-OPS-WP-012**

ROV operations

## FOLLOW YOUR HEART

Your amazing ability to put safety first and the compassion you show those around you is the lifeblood of our organization. We're already very good but we can always get better. Thank you for leading the way in following and improving our procedures and routines.



PLEASE GIVE YOUR FEEDBACK HERE

[hseq@reachsubsea.no](mailto:hseq@reachsubsea.no)



**ELISE**

+47 406 44 307  
[emr@reachsubsea.no](mailto:emr@reachsubsea.no)

